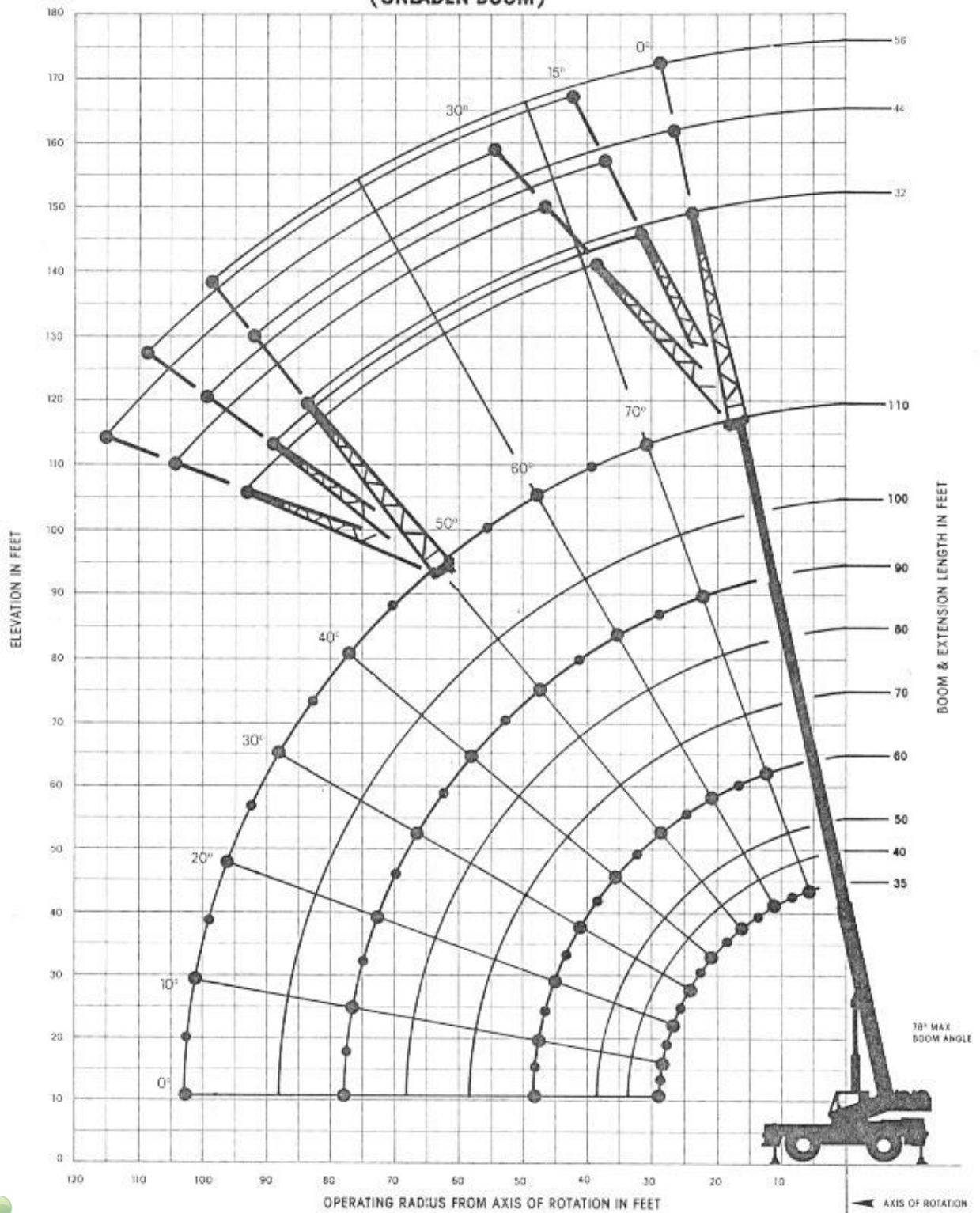




# RT740B

Rough terrain hydraulic crane/35 ft.-110 ft. full power boom

RANGE DIAGRAM  
(UNLADEN BOOM)



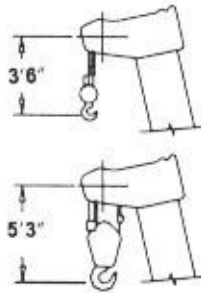
### WEIGHT REDUCTIONS FOR LOAD HANDLING DEVICES

32' OFFSETTABLE	
†Stowed -	671 lbs.
†Erected -	4,149 lbs.

32'-56' TELE OFFSETTABLE BOOM EXTENSION	
†Stowed -	846 lbs.
†Erected (Retracted) -	6,368 lbs.
†Erected (Extended) -	8,287 lbs.

†Reduction of main boom capacities.

HOOKBLOCKS:	
40 Ton, 3 Sheave	910 lbs.
15 Ton, 1 Sheave	290 lbs.
Auxiliary Boom Head	143 lbs.
10 Ton Headache Ball	560 lbs.
7 1/2 Ton Headache Ball	338 lbs.



DIMENSIONS ARE FOR LARGEST GROVE FURNISHED HOOK BLOCK AND HEADACHE BALL WITH ANTI-TWO BLOCK ACTIVATED

### \*ON OUTRIGGERS FULLY EXTENDED - 360°

Radius in Feet	Main Boom Length in Feet									
	35	40	50	*60	70	80	90	100	110	
10	80,000 (66)	68,000 (69.5)	58,100 (74)							
12	67,400 (62)	62,700 (66)	53,700 (71.5)	44,600 (75)						
15	56,500 (56)	54,500 (61)	48,050 (67.5)	41,550 (71.5)	35,600 (74.5)	33,000 (77)				
20	44,000 (44.5)	43,000 (52)	39,400 (61)	33,550 (66.5)	30,500 (70.5)	28,000 (73.5)	25,500 (75.5)	22,150 (77.5)		
25	33,500 (28.5)	33,000 (41.5)	32,400 (54)	27,750 (61)	25,200 (66)	23,800 (69.5)	21,950 (72)	20,400 (74.5)	18,500 (76)	
30		26,500 (27)	25,500 (46)	23,300 (55)	21,050 (61)	20,400 (65.5)	19,300 (68.5)	17,550 (71.5)	15,750 (73.5)	
35			20,300 (36.5)	20,000 (49)	17,950 (56)	17,400 (61.5)	16,400 (65)	15,050 (68)	13,650 (70.5)	
40			16,000 (24)	15,850 (41.5)	15,500 (50.5)	15,050 (57)	14,100 (61.5)	13,100 (65)	12,000 (68)	
45				12,250 (33)	13,000 (45)	13,000 (52.5)	12,300 (57.5)	11,450 (61.5)	10,600 (65)	
50				9,720 (21.5)	10,350 (38.5)	10,750 (47.5)	10,800 (53.5)	10,000 (58.5)	9,500 (62)	
55					8,300 (31)	8,770 (42)	9,170 (49.5)	8,830 (54.5)	8,370 (58.5)	
60					6,650 (20)	7,150 (36)	7,850 (45)	7,840 (51)	7,410 (55.5)	
65						5,830 (29)	6,340 (40)	6,820 (47)	6,590 (52)	
70						4,740 (19)	5,100 (34)	5,590 (42.5)	5,880 (48.5)	
75							4,050 (27.5)	4,540 (38)	4,980 (45)	
80							3,160 (18)	3,650 (32.5)	4,120 (40.5)	
85								2,870 (26)	3,380 (36)	
90								2,190 (17)	2,740 (31)	
95									2,170 (25)	
100									1,790 (16)	
Minimum boom angle (deg.) for indicated length (no load)										0
Maximum boom length (ft) at 0 deg. boom angle (no load)										110

Note: Boom angles are in degrees.

\*60 ft. boom length is with inner-mid extended and outer-mid & fly retracted.

A6-829-008624 (Rev. A)

### 32 FT. - 56 FT. TELE OFFSETTABLE EXTENSION (ON OUTRIGGERS - 360°)

Radius in Feet	32 ft. LENGTH						44 ft. LENGTH						56 ft. LENGTH					
	0° OFFSET		15° OFFSET		30° OFFSET		0° OFFSET		15° OFFSET		30° OFFSET		0° OFFSET		15° OFFSET		30° OFFSET	
	Boom Angle Ref. (Deg.)	Cap. lbs.	Boom Angle Ref. (Deg.)	Cap. lbs.	Boom Angle Ref. (Deg.)	Cap. lbs.	Boom Angle Ref. (Deg.)	Cap. lbs.	Boom Angle Ref. (Deg.)	Cap. lbs.	Boom Angle Ref. (Deg.)	Cap. lbs.	Boom Angle Ref. (Deg.)	Cap. lbs.	Boom Angle Ref. (Deg.)	Cap. lbs.	Boom Angle Ref. (Deg.)	Cap. lbs.
30	78.0	8,500					78.0	5,100										
35	75.5	8,100	78.0	7,000			76.5	5,060										
40	73.5	7,600	75.5	6,600	78.0	5,800	74.5	5,000					76.5	4,000				
45	71.5	7,100	73.5	6,200	76.0	5,470	73.0	4,900	76.5	4,300			74.5	3,920				
50	69.0	6,600	71.5	5,800	73.5	4,960	71.0	4,750	74.5	4,110	77.5	3,300	73.0	3,840	77.0	3,300		
55	67.0	6,050	69.0	5,420	71.5	4,600	68.5	4,550	72.5	3,920	75.0	3,200	71.0	3,770	75.0	3,100		
60	64.5	5,500	67.0	5,070	69.0	4,400	66.5	4,300	70.5	3,750	73.0	3,100	69.5	3,700	73.5	2,920	77.5	2,300
65	62.0	4,860	64.5	4,730	67.0	4,240	64.5	4,010	68.5	3,570	71.0	3,000	67.5	3,610	71.5	2,760	75.5	2,200
70	59.5	4,270	62.0	4,270	64.5	4,090	62.5	3,710	66.5	3,400	69.0	2,900	65.5	3,500	69.5	2,620	73.5	2,100
75	57.0	3,740	59.5	3,740	62.0	3,740	60.5	3,400	64.0	3,200	66.5	2,800	64.0	3,310	68.0	2,500	71.5	2,020
80	54.5	3,260	57.0	3,260	59.5	3,260	58.0	3,090	62.0	3,000	64.5	2,700	62.0	3,000	66.0	2,400	69.5	1,950
85	52.0	2,580	54.5	2,580	57.0	2,580	56.0	2,790	60.0	2,790	62.0	2,600	60.0	2,510	64.0	2,300	67.5	1,880
90	49.0	1,990	52.0	1,990	54.0	1,990	53.5	2,500	57.5	2,500	59.5	2,500	58.0	2,020	61.5	2,020	65.5	1,810
95	46.5	1,470	49.0	1,470	51.0	1,470	51.0	1,990	55.0	1,990	57.0	1,990	56.0	1,660	59.5	1,660	63.0	1,660
100	43.5	1,000	46.0	1,000	48.0	1,000	48.5	1,520	52.5	1,520	54.5	1,520	53.5	1,230	57.5	1,230	61.0	1,230
105							46.0	1,100	50.0	1,100	51.5	1,100	51.5	850	55.0	850	58.5	850

\*Capacity based upon maximum boom angle. No Load Stability Data (See Note 12)

A6-829-008841 (Rev. A)