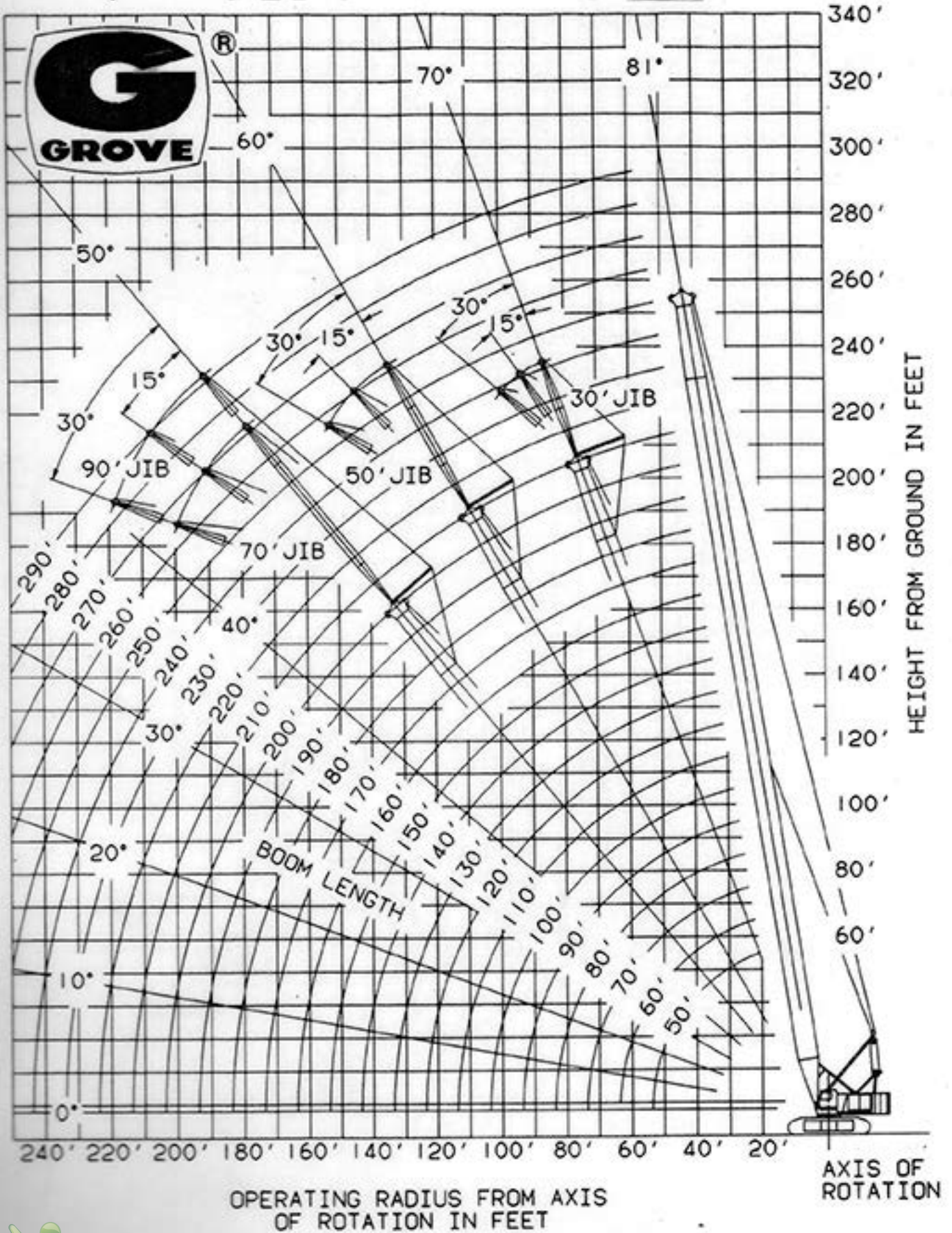
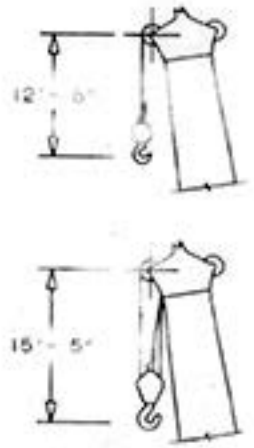
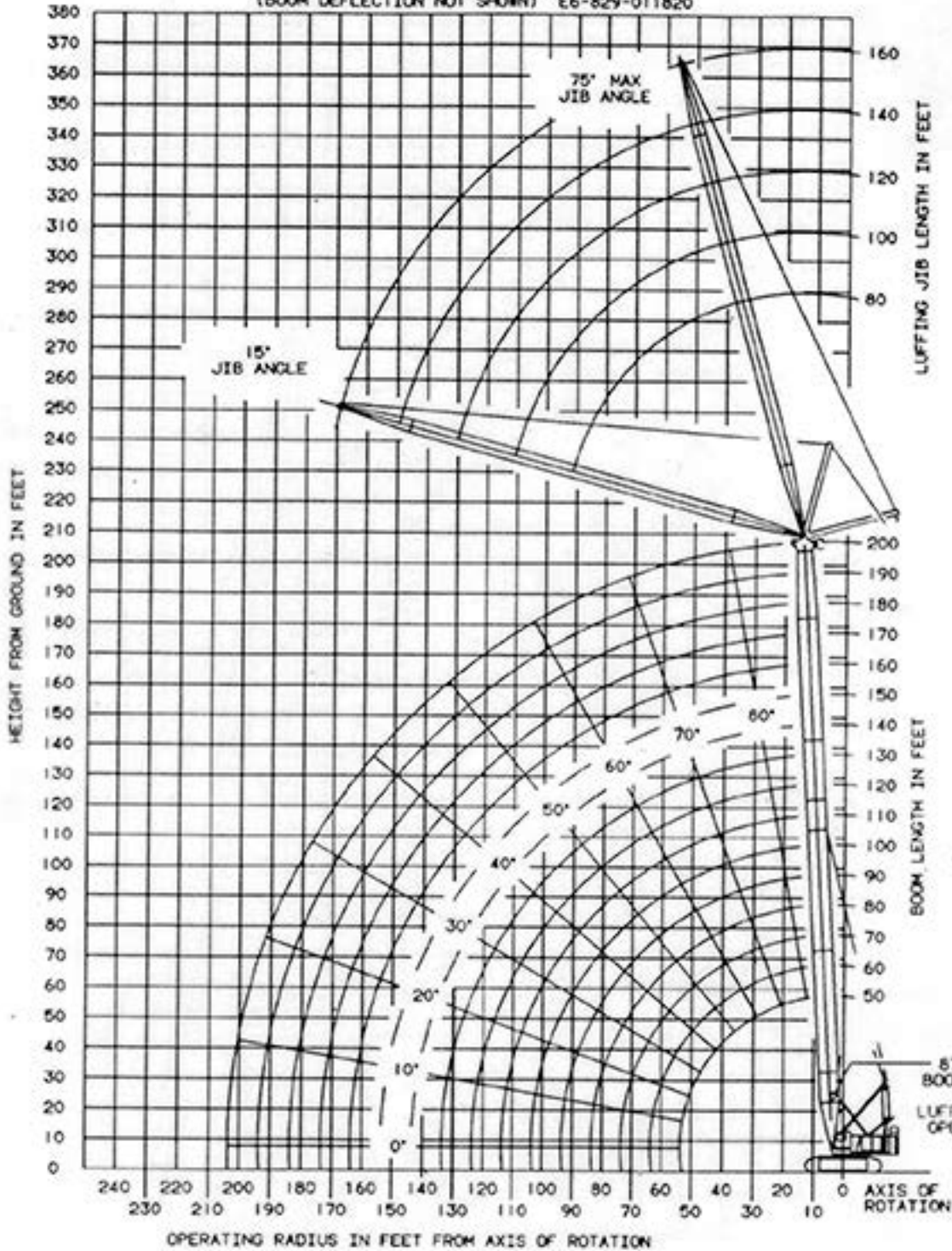


RANGE DIAGRAM (76A BOOM - 32A JIB)



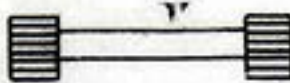
WORKING RANGE DIAGRAM 76A BOOM + 46A JIB  
 (BOOM DEFLECTION NOT SHOWN) E6-829-011820



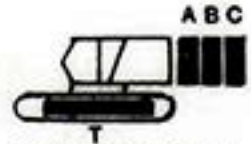
GENERAL NOTE  
 LARGEST LIFTIVE  
 FLUNGLED  
 HOOK BLOCK  
 AND HEADACHE  
 BALL WITH  
 ANTI-TWO  
 BLOCK  
 ACTIVATED.



**76A BOOM - ON CRAWLERS 360°  
75% STABILITY**



**CAPACITY IN POUNDS  
WITH A,B,C & T COUNTERWEIGHTS**



**COUNTERWEIGHT  
CONFIGURATION**

BOOM LGTH	LOAD RAD	BOOM ANG	SHEAVE HGT	RATED LOAD	BOOM LGTH	LOAD RAD	BOOM ANG	SHEAVE HGT	RATED LOAD	BOOM LGTH	LOAD RAD	BOOM ANG	SHEAVE HGT	RATED LOAD
40	12	82.7	47.1	300,000	70	50	51.3	60.5	67,600	110	60	60.9	102.4	52,500
40	13	81.3	46.9	300,000	70	60	39.2	49.6	53,000	110	70	54.7	95.7	42,600
40	14	79.8	46.7	300,000	70	70	21.6	30.6	43,000	110	80	47.8	87.2	35,400
40	15	78.3	46.4	300,000	80	18	82.0	86.7	255,700	110	90	40.1	76.2	30,000
40	16	76.8	46.1	300,000	80	19	81.3	86.5	253,600	110	100	30.6	61.2	25,900
40	17	75.3	45.7	300,000	80	20	80.6	86.3	251,500	110	110	16.7	36.4	22,400
40	18	73.8	45.4	285,400	80	25	76.9	85.1	181,600	120	26	80.8	125.8	170,600
40	19	72.2	45.0	269,900	80	30	73.2	83.5	137,600	120	30	78.9	125.0	137,200
40	20	70.7	44.6	256,000	80	35	69.3	81.6	110,100	120	35	76.4	123.8	109,600
40	25	62.6	41.9	181,300	80	40	65.4	79.3	91,300	120	40	74.0	122.3	90,700
40	30	53.7	38.2	137,500	80	45	61.3	76.5	77,800	120	45	71.4	120.6	77,200
40	35	43.4	33.0	110,200	80	50	57.0	73.2	67,500	120	50	68.9	118.6	66,800
40	40	29.9	25.0	91,500	80	60	47.7	64.8	52,900	120	60	63.6	113.9	52,200
50	13	83.0	75.0	300,000	80	70	36.4	52.8	42,900	120	70	58.0	108.0	42,300
50	14	81.9	56.9	300,000	80	80	20.0	32.2	35,700	120	80	52.1	100.6	35,100
50	15	80.7	56.7	300,000	90	19	82.3	96.6	243,100	120	90	45.6	91.3	29,700
50	16	79.5	56.5	300,000	90	20	81.6	96.5	241,000	120	100	38.2	79.6	25,600
50	17	78.3	56.2	298,700	90	25	78.4	95.4	181,600	120	110	29.2	63.7	22,200
50	18	77.1	55.9	284,500	90	30	75.1	94.0	137,600	120	120	15.9	37.7	19,300
50	19	75.9	55.6	269,100	90	35	71.7	92.3	110,100	130	27	81.1	135.8	160,600
50	20	74.7	55.3	255,200	90	40	68.3	90.3	91,400	130	30	79.8	135.2	136,900
50	25	68.6	53.2	181,400	90	45	64.8	87.9	77,900	130	35	77.5	134.1	109,400
50	30	62.1	50.5	137,500	90	50	61.1	85.1	67,500	130	40	75.2	132.8	90,600
50	35	55.1	47.0	110,100	90	60	53.4	78.2	53,000	130	45	72.9	131.2	77,000
50	40	47.3	42.4	91,400	90	70	44.7	68.8	43,000	130	50	70.6	129.4	66,600
50	45	38.2	36.3	77,900	90	80	34.2	55.7	35,900	130	60	65.8	125.1	52,100
50	50	26.2	27.1	67,500	90	90	18.7	33.7	30,400	130	70	60.8	119.8	42,100
60	15	82.3	66.9	280,300	100	20	82.5	106.6	229,100	130	80	55.5	113.2	35,000
60	16	81.3	66.7	278,800	100	25	79.6	105.6	181,600	130	90	49.9	105.2	29,600
60	17	80.3	66.5	277,400	100	30	76.6	104.4	137,500	130	100	43.7	95.3	25,500
60	18	79.3	66.2	276,100	100	35	73.6	102.9	110,000	130	110	36.6	82.8	22,100
60	19	78.4	66.0	268,700	100	40	70.6	101.1	91,200	130	120	28.0	66.1	19,300
60	20	77.4	65.7	254,800	100	45	67.5	99.0	77,600	130	130	15.2	38.9	16,900
60	25	72.3	64.1	181,500	100	50	64.3	96.6	67,300	140	29	80.9	145.6	144,000
60	30	67.2	61.9	137,600	100	60	57.6	90.6	52,700	140	30	80.5	145.4	136,800
60	35	61.7	59.2	110,200	100	70	50.4	82.8	42,800	140	35	78.4	144.4	109,300
60	40	55.9	55.8	91,500	100	80	42.2	72.6	35,600	140	40	76.3	143.1	90,300
60	45	49.7	51.5	77,900	100	90	32.3	58.5	30,200	140	45	74.2	141.7	76,800
60	50	42.7	46.2	67,600	100	100	17.6	35.1	26,000	140	50	72.0	140.0	66,400
60	60	23.6	28.9	52,900	110	24	81.1	116.0	193,800	140	60	67.6	136.1	51,800
70	17	81.7	76.7	269,000	110	25	80.5	115.9	181,400	140	70	63.1	131.2	41,800
70	18	80.9	76.5	267,000	110	30	77.9	114.7	137,300	140	80	58.3	125.3	34,700
70	19	80.1	76.3	263,900	110	35	75.2	113.4	109,800	140	90	53.3	118.2	29,300
70	20	79.2	76.0	254,500	110	40	72.4	111.8	91,000	140	100	47.9	109.6	25,200
70	25	75.0	74.6	181,600	110	45	69.7	109.9	77,400	140	110	42.0	99.1	21,800
70	30	70.6	72.8	137,600	110	50	66.8	107.7	67,100	140	120	35.2	85.9	19,000
70	35	66.1	70.6	110,200	110	60	57.6	90.6	52,700	140	130	26.9	68.4	16,600
70	40	61.5	67.8	91,500	110	70	50.4	82.8	42,800	140	140	14.6	40.1	14,600
70	45	56.6	64.5	78,000	110	80	42.2	72.6	35,600					

RATED LOADS APPEARING IN SHADED AREAS ARE BASED ON STRUCTURAL OR OTHER FACTORS RATHER THAN STABILITY.

READ AND UNDERSTAND LIFTING CAPACITY NOTES ON A6-829-800122 LOCATED IN THE FRONT OF THIS MANUAL BEFORE OPERATING THIS MACHINE.

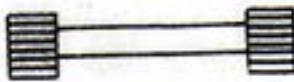
†LMI OPERATING CODE. REFER TO LMI MANUAL FOR INSTRUCTIONS.

**73981**  
SERIAL NUMBER

**HL150C**  
IDENTIFICATION



76A BOOM - ON CRAWLERS 360°  
75% STABILITY



CAPACITY IN POUNDS  
WITH A,B,C & T COUNTERWEIGHTS



COUNTERWEIGHT  
CONFIGURATION

BOOM LGTH	LOAD RAD	BOOM ANG	SHEAVE HGT	RATED LOAD	BOOM LGTH	LOAD RAD	BOOM ANG	SHEAVE HGT	RATED LOAD	BOOM LGTH	LOAD RAD	BOOM ANG	SHEAVE HGT	RATED LOAD
150	30	81.1	155.6	136,600	180	35	81.0	185.2	108,400	200	140	48.0	154.3	12,800
150	35	79.2	154.6	109,000	180	40	79.4	184.2	89,400	200	150	43.9	144.3	11,100
150	40	77.2	153.5	90,100	180	45	77.8	183.1	75,800	200	160	39.5	132.7	9,600
150	45	75.3	152.1	76,500	180	50	76.1	181.9	65,300	200	170	34.7	119.0	8,300
150	50	73.3	150.6	66,100	180	60	72.8	178.9	50,700	200	180	29.1	102.4	7,200
150	60	69.2	147.0	51,500	180	70	69.4	175.3	40,700	200	190	22.3	80.7	6,100
150	70	65.0	142.5	41,600	180	80	66.0	170.9	33,500	200	200	12.0	46.4	5,200
150	80	60.7	137.1	34,400	180	90	62.4	165.9	28,300	210	40	80.9	214.7	88,500
150	90	56.1	130.6	29,200	180	100	58.7	160.0	24,100	210	45	79.5	213.8	75,000
150	100	51.3	122.9	24,900	180	110	54.8	153.2	20,600	210	50	78.2	212.7	64,500
150	110	46.1	113.8	21,500	180	120	50.8	145.3	17,800	210	60	75.3	210.2	49,900
150	120	40.4	102.7	18,700	180	130	46.5	136.2	15,500	210	70	72.5	207.2	39,800
150	130	33.9	88.9	16,400	180	140	41.8	125.5	13,500	210	80	69.6	203.6	32,600
150	140	26.0	70.6	14,300	180	150	36.7	112.8	11,800	210	90	66.6	199.4	27,400
150	150	14.1	41.2	12,600	180	160	30.8	97.2	10,300	210	100	63.6	194.5	23,200
160	32	81.0	165.4	123,900	180	170	23.6	76.9	9,000	210	110	60.5	189.0	19,700
160	35	79.9	164.8	108,800	180	180	12.7	44.4	7,800	210	120	57.3	182.8	16,900
160	40	78.1	163.7	89,900	190	37	80.9	195.0	99,700	210	130	53.9	175.7	14,600
160	45	76.2	162.5	76,300	190	40	80.0	194.4	89,100	210	140	50.4	167.7	12,600
160	50	74.3	161.1	65,800	190	45	78.4	193.4	75,500	210	150	46.7	158.6	10,900
160	60	70.6	157.7	51,300	190	50	76.9	192.2	65,000	210	160	42.8	148.2	9,400
160	70	66.7	153.5	41,300	190	60	73.7	189.4	50,400	210	170	38.5	136.2	8,100
160	80	62.7	148.6	34,100	190	70	70.6	186.0	40,400	210	180	33.8	122.0	6,900
160	90	58.5	142.7	28,800	190	80	67.3	181.9	33,200	210	190	28.4	104.9	5,900
160	100	54.2	135.7	24,600	190	90	64.0	177.2	28,000	210	200	21.7	82.6	5,000
160	110	49.5	127.5	21,200	190	100	60.5	171.7	23,800	220	41	81.1	224.7	85,100
160	120	44.6	117.8	18,400	190	110	57.0	165.4	20,300	220	45	80.0	224.0	74,700
160	130	39.1	106.2	16,000	190	120	53.2	158.2	17,500	220	50	78.7	223.0	64,200
160	140	32.8	91.8	14,000	190	130	49.3	149.9	15,200	220	60	76.0	220.6	49,600
160	150	25.1	72.8	12,300	190	140	45.2	140.3	13,200	220	70	73.3	217.7	39,500
160	160	13.6	42.3	10,800	190	150	40.6	129.2	11,500	220	80	70.6	214.3	32,300
170	34	80.8	175.2	113,200	190	160	35.6	116.0	10,000	220	90	67.8	210.3	27,100
170	35	80.5	175.0	108,600	190	170	29.9	99.8	8,700	220	100	64.9	205.7	22,800
170	40	78.8	174.0	89,600	190	180	22.9	78.8	7,500	220	110	62.0	200.5	19,400
170	45	77.0	172.8	76,000	190	190	12.4	45.4	6,500	220	120	58.9	194.7	16,600
170	50	75.3	171.5	65,600	200	38	81.1	204.9	95,700	220	130	55.8	188.1	14,200
170	60	71.8	168.3	51,000	200	40	80.5	204.6	88,800	220	140	52.6	180.6	12,200
170	70	68.1	164.5	41,000	200	45	79.0	203.6	75,300	220	150	49.2	172.2	10,500
170	80	64.4	159.8	33,800	200	50	77.5	202.5	64,800	220	160	45.6	162.7	9,000
170	90	60.6	154.4	28,600	200	60	74.6	199.8	50,200	220	170	41.8	152.0	7,700
170	100	56.6	148.0	24,400	200	70	71.6	196.6	40,100	220	180	37.6	139.5	6,600
170	110	52.4	140.6	21,000	200	80	68.5	192.8	32,900	220	190	33.0	125.0	5,600
170	120	47.9	131.9	18,200	200	90	65.4	188.3	27,700	220	200	27.7	107.3	4,600
170	130	43.1	121.7	15,800	200	100	62.2	183.2	23,400					
170	140	37.8	109.5	13,800	200	110	58.8	177.3	20,000					
170	150	31.7	94.5	12,100	200	120	55.4	170.6	17,200					
170	160	24.3	74.8	10,600	200	130	51.8	163.0	14,800					
170	170	13.1	43.3	9,300										

RATED LOADS APPEARING IN SHADED AREAS ARE BASED ON STRUCTURAL OR OTHER FACTORS RATHER THAN STABILITY.

READ AND UNDERSTAND LIFTING CAPACITY NOTES ON A6-829-800122 LOCATED IN THE FRONT OF THIS MANUAL BEFORE OPERATING THIS MACHINE.

†LMI OPERATING CODE. REFER TO LMI MANUAL FOR OPERATING INSTRUCTIONS.

73981  
SERIAL NUMBER

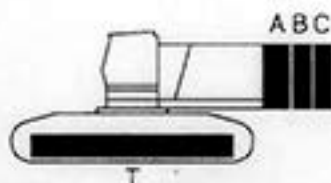
HL150C  
IDENTIFICATION





LUFFING JIB (76A BOOM + 46A JIB)  
ON CRAWLERS 360°  
75% STABILITY

160 FT. BOOM + 160 FT. JIB



CAPACITY IN POUNDS  
WITH A, B, C & T COUNTERWEIGHTS

COUNTERWEIGHT CONFIGURATION

RADIUS IN FEET	#4045												RADIUS IN FEET
	BOOM ANGLE 87°			BOOM ANGLE 85°			BOOM ANGLE 80°			BOOM ANGLE 75°			
	JIB ANGLE	SHEAVE HGT.	RATED LOAD	JIB ANGLE	SHEAVE HGT.	RATED LOAD	JIB ANGLE	SHEAVE HGT.	RATED LOAD	JIB ANGLE	SHEAVE HGT.	RATED LOAD	
60	72.6	322.3	33,700	74.7	323.5	37,800							60
70	68.8	318.9	28,500	71.7	320.5	33,000							70
80	64.9	314.6	24,500	67.1	316.7	28,000							80
90	60.9	309.5	21,300	63.2	312.1	24,200	68.7	316.5	29,400				90
100	56.7	303.4	18,400	59.1	306.6	20,900	64.8	312.2	25,600				100
110	52.3	296.3	16,000	54.8	300.0	18,100	60.8	307.0	22,500				110
120	47.6	287.9	13,900	50.3	292.4	15,700	56.6	300.9	20,000	62.3	306.0	17,900	120
130	42.6	277.9	12,000	45.5	283.4	13,500	52.2	293.8	17,900	58.2	300.3	15,900	130
140	37.0	265.9	10,400	40.2	272.6	11,700	47.5	285.3	16,000	53.9	293.6	14,300	140
150	30.5	250.9	9,000	34.3	259.4	10,100	42.4	275.3	13,700	49.3	285.6	12,900	150
160	22.5	230.9	7,800	27.3	242.7	8,700	35.8	263.2	11,700	44.4	276.3	11,700	160
170				19.0	218.7	7,500	30.3	248.1	10,000	39.0	265.0	10,700	170
180							22.2	227.8	8,400	32.9	251.2	9,700	180
190							8.7	191.6	7,000	25.5	233.4	8,900	190
200										15.3	206.5	7,900	200

RADIUS IN FEET	BOOM ANGLE 70°			BOOM ANGLE 65°			BOOM ANGLE 60°						RADIUS IN FEET
	JIB ANGLE	SHEAVE HGT.	RATED LOAD	JIB ANGLE	SHEAVE HGT.	RATED LOAD	JIB ANGLE	SHEAVE HGT.	RATED LOAD				
140	59.6	298.2	12,500										140
150	55.4	291.8	11,200										150
160	50.9	284.3	10,100										160
170	46.1	275.5	9,200	52.3	281.3	7,800							170
180	40.9	264.9	8,300	47.6	272.9	7,000							180
190	35.1	252.1	7,600	42.6	262.9	6,300	48.8	268.7	5,100				190
200	28.3	236.0	6,900	37.0	250.9	5,700	43.9	259.1	4,600				200
210	19.4	213.3	6,300	30.5	236.0	5,200	38.5	247.7	4,100				210
220				22.5	215.9	4,700	32.3	233.6	3,600				220
230				9.5	181.0	4,200	24.8	215.2	3,200				230
240							13.9	186.7	2,900				240

WARNING: DEDUCT THE "WEIGHT OF ALL LOAD HANDLING DEVICES" REEVED OVER THE MAIN BOOM POINT, FROM PUBLISHED JIB CAPACITY VALUES, WHEN HANDLING LOADS OVER THE JIB POINT.

RATED LOADS APPEARING IN SHADED AREAS ARE BASED ON STRUCTURAL OR OTHER FACTORS RATHER THAN STABILITY. READ AND UNDERSTAND LIFTING CAPACITY NOTES LOCATED IN THE FRONT OF THIS MANUAL BEFORE OPERATING THIS MACHINE.

SEE OPERATING CODE. REFER TO LMI MANUAL FOR INSTRUCTIONS.

A6-829-011658

HL150C - S/N 73981