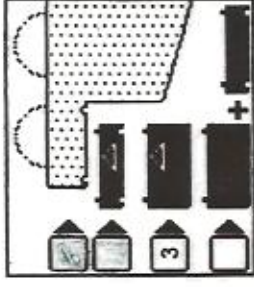


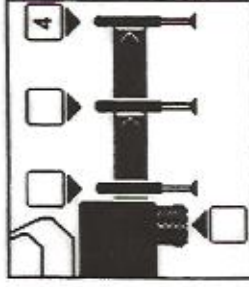
PART ' A ' COUNTERWEIGHT - 33120 LBS OUTRIGGERS FULLY EXTENDED AT 25' 0"



1 MAIN BOOM



3 WITH 33120 LBS COUNTERWEIGHT



4 OUTRIGGERS FULLY EXTENDED

WARNING

BELOW 30° BOOM ANGLES, GREAT CARE MUST BE EXERCISED WHEN SLEWING OR DEPLOYING DOWN TO AVOID DAMAGING CHASSIS EQUIPMENT E.G. CAB, EXHAUST, BOOM, REST, ETC. 9-776

L.M.L. CODE	MODE ' B ' MAIN BOOM IN FEET - 360°																						
	OVER REAR ONLY			180° OVER REAR ONLY			MAIN BOOM IN FEET - 360°					L'											
RADIUS IN FEET	42'6"	L'	42'6"	L'	42'6"	L'	71'9"	L'	86'6"	L'	101'3"		L'	115'9"	L'	130'6"	L'	145'3"	L'	160'0"	L'		
8.8	284550	72.7	242500	72.7	135600	79.1																	
11.5	109750	68.8	189750	69.8	137750	76.5	119050	80.4															
13.1	102100	67.4	182100	67.4	130700	75.3	111600	78.6															
14.8	165350	64.8	185350	64.8	163350	64.9	114300	78.2	92600	79.7													
16.4	192100	62.2	182100	62.2	168900	73.2	100400	76.8	86400	78.5													
23.0	182900	56.6	128300	56.6	128300	56.6	88450	69.6	80850	75.3	78950	76.2											
26.2	197500	51.6	107500	51.6	107500	51.6	89600	67.1	82000	72.5	71200	73.8	64250	77.2	50000	80.0							
29.5	70500	44.8	91700	44.8	91700	44.8	82200	63.7	76400	70.4	64900	71.6	58950	75.3	52900	78.4	43450	75.4					
32.8	68550	36.3	78500	36.3	78500	36.3	74800	59.5	70200	66.4	59100	69.3	55450	72.3	48700	77.2	43450	76.2	32100	78.9	25350	80.3	
39.4							68600	26.2	67600	55.0	55950	64.1	54900	57.2	51600	70.9	45900	73.7	41450	77.0	32100	78.9	25350
45.8							51800	48.8	52250	59.7	47600	65.4	44100	65.4	41800	68.8	37250	72.8	32100	73.3	23050	77.7	
52.5							38900	39.0	39350	54.0	36700	56.0	37050	62.8	35850	67.3	32600	71.0	30300	73.7	23050	78.1	
59.1							28650	27.2	30450	46.6	30850	49.3	30050	55.3	35850	63.6	28550	67.8	28100	70.9	21600	72.5	
65.6							19200	39.6	23800	38.6	24250	43.5	24050	52.7	25600	56.1	25600	63.3	24700	67.8	20300	70.4	
72.2											10200	36.5	18950	48.0	20700	54.8	22050	60.9	21400	64.5	18650	67.6	
78.7											13100	28.7	15000	45.0	16650	50.3	17950	57.3	18300	61.5	15850	64.3	
85.3											9150	25.5	11900	35.4	13450	45.9	14750	53.2	15550	56.6	14550	61.3	
91.9											8930	19.3	8600	25.8	9610	34.8	10900	40.9	13000	55.3	13250	56.7	
105.0																							
111.3																							
124.7																							
131.2																							
137.8																							
MINIMUM BOOM ANGLE																							
	64150	16.0	64150	16.0	28500	13.5	20150	17.7	12350	16.3	6830	16.3	4740	17.7	2980	17.0							
% TELESCOPE CAPACITY	34.9		34.9		56.1		63.3		77.4		91.9		106.0		129.2		171.1	(134.5)	28°	(144.4)			
% TELESPOPE T1	0		0		75		75		75		100		100		100		100		100		100	100	100
% TELESPOPE T2	0		0		0		25		75		100		100		100		100		100		100	100	100
% TELESPOPE T3	0		0		0		0		0		0		25		50		75		100		100	100	100

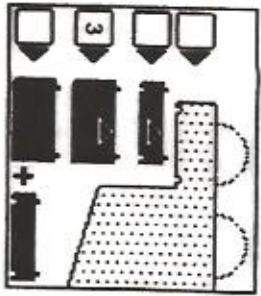
NOTE: () REFERENCE RADII IN FEET FOR LOW ANGLE CAPACITIES. CAPACITIES ABOVE THE BOLD LINE ARE BASED ON STRUCTURAL STRENGTH AND BELOW THE LINE DO NOT EXCEED 85% OF THE TIPPING LOAD AS DETERMINED BY TEST IN ACCORDANCE WITH SAE J765. NOTE: WHEN LIFTING OVER AUXILIARY BOOM NOSE, CAPACITIES OF MAIN BOOM, LESS THE REDUCTION FOR FITMENT OF AUXILIARY BOOM NOSE SHALL APPLY. THE MAXIMUM CAPACITY SHALL NOT EXCEED THE AUXILIARY HOIST SINGLE LINE PULL.

SERIAL NUMBER
886642

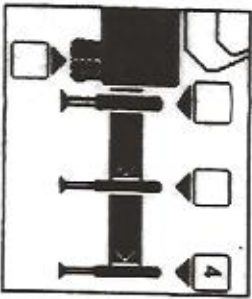
IDENTIFICATION
AT9120E

PART 'A' COUNTERWEIGHT - 33120 LBS OUTRIGGERS FULLY EXTENDED AT 25' 0"

LIFTING CAPACITIES IN POUNDS - 360°



3 WITH 33120 LBS COUNTERWEIGHT



4 OUTRIGGERS FULLY EXTENDED

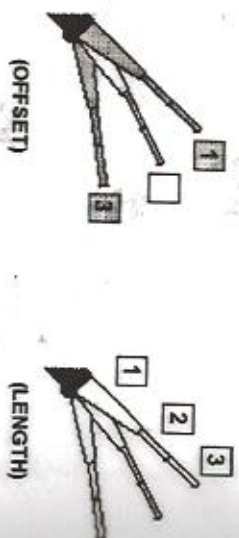
L.M.I. CODE	# 0121		# 0123		# 0131		# 0133		# 0141		# 0143		
	33 FT. LENGTH				48 FT. LENGTH				58 FT. LENGTH				
	REF. RADIUS IN FEET	2° OFFSET L°	30° OFFSET L°	LOAD	2° OFFSET L°	30° OFFSET L°	LOAD	2° OFFSET L°	30° OFFSET L°	LOAD	2° OFFSET L°	30° OFFSET L°	LOAD
42.0	MAX	11800											
45.9	79.0°	11250			MAX	8150@							
52.5	77.0°	10450	MAX	10450@	79.0°	7830							
59.1	75.0°	9700	79.5°	10050@	77.0°	7280							
65.6	73.0°	9040	77.5°	9260	75.0°	6720							
75.5	70.0°	8050	74.0°	8270	72.5°	5950							
85.3	66.0°	7060	71.0°	7390	69.5°	5290							
95.1	63.5°	6280	67.5°	6610	66.0°	4630							
105.0	60.0°	5510	64.0°	5840	63.0°	3970							
114.8	55.5°	4850	60.0°	5290	60.0°	3420							
124.7	51.5°	3750	55.0°	4630	56.5°	2980							
134.5	47.0°	2200	50.5°	2980	53.0°	2650							
144.4					49.0°	2090							
154.2					54.0°	2650							
164.0					47.0°	1540							
					47.5°	1210							
					48.0°	1430							
					44.5° (164') 44.0° (164')								
					46.5° (167.3')								

1. L.M.I. OPERATING CODE REFER TO L.M.I. MANUAL FOR INSTRUCTIONS.

AT9120E25 N/15/129/250

1. ALL CAPACITIES ABOVE THE BOLD LINE ARE BASED ON STRUCTURAL STRENGTH OF THE EXTENSION AND BELOW THE LINE DO NOT EXCEED 85% OF THE TIPPING LOAD AS DETERMINED BY TEST IN ACCORDANCE WITH SAE J765.
 2. RATED LOAD IS BASED ON LOADED MAIN BOOM ANGLE WITH REFERENCE TO HORIZONTAL, REGARDLESS OF MAIN BOOM LENGTH QUOTED. (REF. RADIUS IN FEET IS FOR BOOM LENGTH SHOWN ABOVE ONLY)
WARNING:-
 OPERATION OF THIS MACHINE WITH HEAVIER LOADS THAN THE CAPACITIES LISTED IS STRICTLY PROHIBITED. MACHINE TIPPING WITH THE EXTENSION OCCURS RAPIDLY AND WITHOUT WARNING. REMOVE ALL REEVEING / RIGGING ACCESSORIES FROM MAIN BOOM WHEN USING THE EXTENSION.
 3. 33' 0" - 58' 0" TELE OFFSETTABLE BOOM EXTENSION WARNING:- WITH THE EXTENSION IN THE WORKING POSITION, THE MAIN BOOM MUST BE FULLY RETRACTED FOR BOOM ANGLES LESS THAN THOSE SHOWN ON THE LOAD CHART FOR THAT PARTICULAR EXTENSION LENGTH AND OFFSET. THIS WARNING ALSO APPLIES FOR BOOM EXTENSION ERECTION PURPOSES.

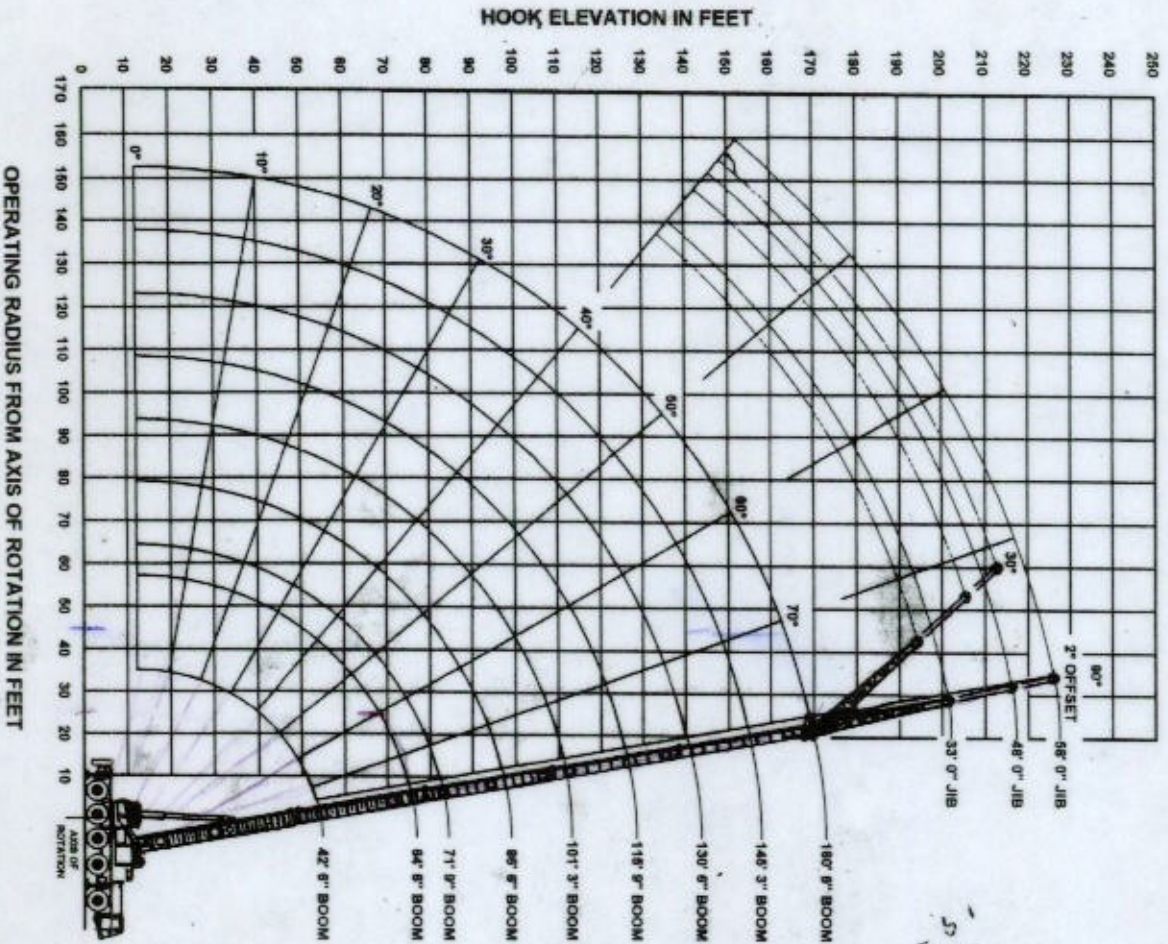
MAIN BOOM 160' 0"		
T1	100	100
T2	100	100
T3	100	100



EXT OFFSET	EXT LENGTH	PAT SELECTION	
		EXT OFFSET	EXT LENGTH
2°	33 FT.	1	1
30°	33 FT.	3	1
2°	48 FT.	1	2
30°	48 FT.	3	2
2°	58 FT.	1	3
30°	58 FT.	3	3



RANGE DIAGRAM



WEIGHT REDUCTION FOR LOAD HANDLING DEVICES

WEIGHT REDUCTION FOR NON FITMENT OF
AUX HOIST ROPE - 993 LBS

AUXILIARY BOOM NOSE - 265 LBS

HOOKBLOCKS
4 SHEAVE - 2075 LBS
2 SHEAVE - 442 LBS

33' 0" - 58' 0" EXTENSION.
STOWED BUT NOT IN USE - 1038 LBS
ERECTED (33' 0") BUT NOT IN USE - 8458 LBS
ERECTED (48' 0") BUT NOT IN USE - 10000 LBS
ERECTED (58' 0") BUT NOT IN USE - 10974 LBS

NOTE: ALL LOAD HANDLING DEVICES AND BOOM ATTACHMENTS ARE CONSIDERED PART OF THE LOAD AND SUITABLE ALLOWANCES MUST BE MADE FOR THEIR COMBINED WEIGHTS. WEIGHTS ARE FOR GROVE FURNISHED EQUIPMENT.

LINE PULL AND RECEIVING INFORMATION

HOIST	CABLE SPEC.	PERMISSIBLE LINE PULLS
MAIN *	25MM DYFORM 34 L R BREAKING LOAD 115746 LBS	19880 LBS
AUX **	19 MM DYFORM 34 LR BREAKING LOAD 68100 LBS	14793 LBS

HOOKBLOCKS

